

## ART EXHIBITS AND ART PROGRAMS



Painting for ArtPartners Auction

At least twelve art exhibitions show annually. The recognized annual exhibits are the Congressional Student Art Competition, Sylacauga City Schools, Photography Competition, Artist Selects, ArtPartners (Special Needs Art Exhibit and Auction) and Local Artists Expo.

### Special Thanks

#### Comer Society Donor (\$10,000)

City of Sylacauga

#### Patrons (\$500)

Dr. Allen Yielding  
Donald Comer, III

#### Benefactors (\$1,000)

Alabama Trust Bank	Rachel Hobson
Marble City Pharmacy	Imery's
Mr & Mrs. Sanford Pinkerton	City of Oak Grove

#### Supporters (\$250)

Blue Bell Creameries	Kiwanis Club of Sylacauga
Mr. & Mrs. Harry Brown, Sr.	Sylacauga High School Art Club

### Motels

Jameson Inn  
89 Gene Stewart Blvd.  
Sylacauga, AL 35151  
(800) 526-3766  
(256) 245-4141

Super 8  
40770 U.S. Highway 280  
Sylacauga, AL 35151  
(800) 889-9698  
(256) 249-4321

Towne Inn  
40860 U.S. Highway 280  
Sylacauga, AL 35151  
(256) 249-3821

Holiday Inn Express  
40743 U.S. Highway 280  
Sylacauga, AL 35150  
(800) 465-4329  
(256) 207-1511

### Sylacauga Restaurants

#### Fast Food

Arby's	245-3444	KFC	249-9076
Burger King	249-3234	Little Caesar's	245-7828
Captain D's	245-2338	McDonald's	249-4611
Dairy Queen	245-2188	Sonic Drive-In	249-2593
Domino's Pizza	249-4333	Subway	245-7824
Hardee's	245-7657	Wendy's	249-2697
Jack's	249-4006		

#### Others

Buttermilk Hill	207-1001	JR's	207-4222
Comet BBQ & Deli	208-0463	LaCosta	249-3360
Downtown Grill	249-1051	Mama Ree's	245-6531
El Paso	249-8811	Marble City Grill	245-8108
Faye's Bar-B-Que	245-0490	Peking Garden	249-8688
Fincher's	207-2426	Pizza Hut	245-7073
Giovanni's	208-0351	Raspberry Bakery	249-0808
Golden Rule	207-0570	Tierra Caliente	207-3800
Hickory Street Cafe	249-5668	Zaxby's	249-3338
Hobo's Barbeque	249-0018	Huddle House	245-3885

## ISABEL ANDERSON COMER MUSEUM & ARTS CENTER

P. O. Box 245  
711 NORTH BROADWAY  
(ALABAMA HIGHWAY 21)  
SYLACAUGA, ALABAMA 35150

### HOURS

TUESDAY THROUGH FRIDAY  
10:00 A.M. TO 5:00 P.M.

OTHER TIMES BY APPOINTMENT  
TOUR GROUPS WELCOME  
NO ADMISSION CHARGE  
ACCESSIBLE TO HANDICAPPED



## EXPERIENCE ART

# SYLACAUGA

## The Marble City



Ms. Alabama by Italian Sculptor Giuseppe Moretti

The whitest marble in the world comes from Sylacauga's quarries. Its beauty can be appreciated on the museum's facade and several marble sculptures that are on permanent exhibit, such as Ms. Alabama by Italian Sculptor Giuseppe Moretti (above). In addition, the geological history of calcium carbonate (marble) and its chemical composition are explained, including answers to such questions as: How was marble formed? Why is some marble pink, green, or gray? What causes sink holes? How is marble used today?



Calcium Carbonate

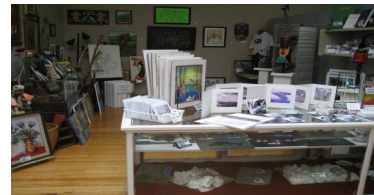
## Important Memorabilia



The Isabel Anderson Comer Museum & Arts Center houses hundreds of memorabilia from our native son Jim Nabors. Nabors' was born and raised in Sylacauga. His singing career began at Sylacauga High School, where he was featured in numerous performances of the High School's Glee Club. He is also known to television viewers as Gomer Pyle, the bumbling gas station attendant on The Andy Griffith Show (above). From that role, a new series was born, and Jim Nabors became known as "Gomer Pyle, USMC". A very successful Jim Nabors Hour, which displayed his true singing capabilities.



Monthly Painting Classes - "Palette Pleasures"



Our gift shop offers a variety of over 200 items, including original artwork by local artists, Jim Nabors memorabilia and much more.

## Local History

Prior to its incorporation as a town in 1834, Sylacauga was home to Shawnee Indians, who came to this area from Ohio and became part of the Creek Confederacy. Archeological digs have uncovered artifacts of Indian, Spanish and other European origins. Many are on display in the museum.



Decorative animal effigy pieces and clay pipe fragment



A replica of the Hodges meteorite, along with written documentation about the incident. On November 30, 1954, a meteorite struck Mrs. Ann Hodges in her Sylacauga home. It is the only documented human ever to be hit by a meteorite.



Military memorabilia, photographs of people and scenes of old Sylacauga, bound volumes of old local newspapers dating back to the 1940's, period clothing, antique furnishings and tools, etc.